

CERTIFICATE OF LOCATION OF GOVERNMENT CORNER

NORTH QUARTER Corner of Section 35, Township 108N, Range 39W

5th Principal Meridian, State of Minnesota, County of MURRAY

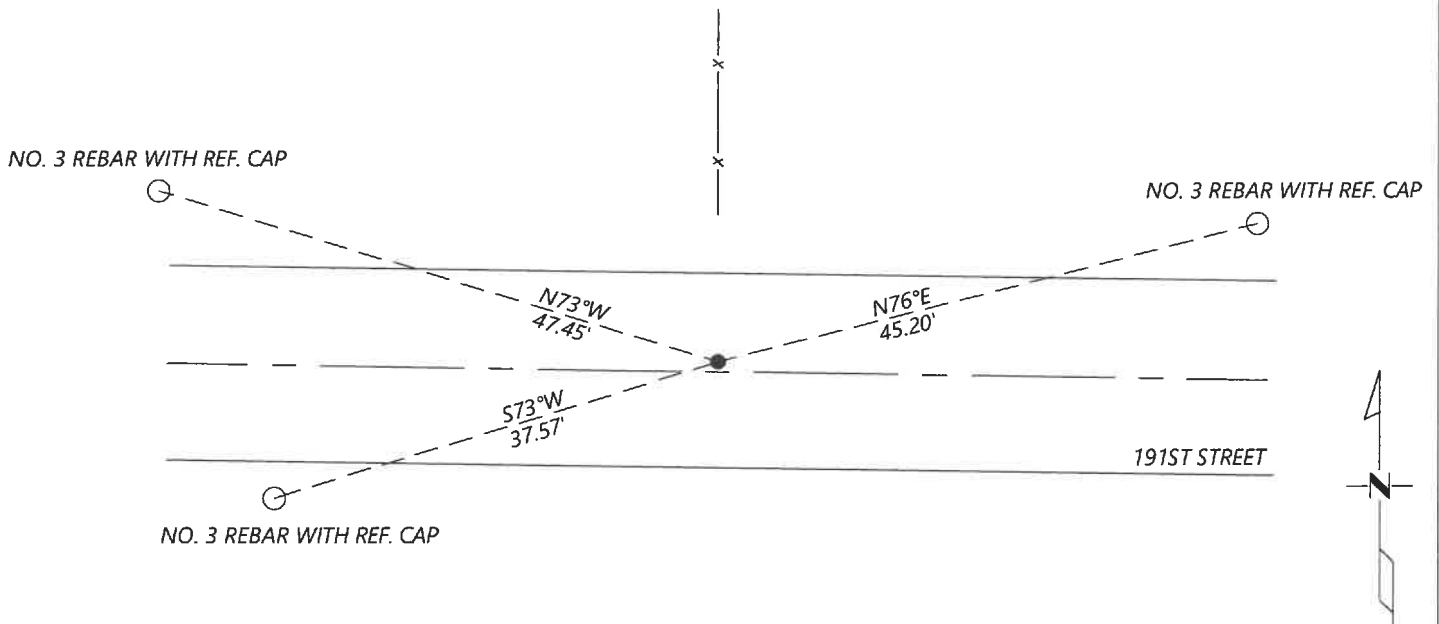
At the corner location shown on the sketch:

On 8/27/2020 found a NO. 5 REBAR WITH YELLOW PLASTIC CAP "ZIESKE LS 23008"
DATE

left monument as found lowered monument removed monument (explain)

On _____ placed a _____
DATE

SKETCH OF REFERENCE TIES



N.T.S.

Statement of evidence for this corner location is on back of this page.

I hereby certify that this document was researched and prepared by me or under my direct supervision and that I am a licensed Land Surveyor under the laws of the State of Minnesota.

Signature [Handwritten Signature]

Date 6/17/2024 License No. 45874

Title:

- Land Surveyor Professional Engineer
- County Surveyor County Engineer

OFFICE OF THE COUNTY RECORDER

County of Murray

I hereby certify that this document was filed in the Co.

Recorder's office at _____ M. on the _____ day of _____ A.D. 20

County Recorder [Handwritten Signature: Karen Brown]
by JUN 22 2021, Deputy

DOCUMENT NO. _____

JASON LATZKE
Minnesota License No. 45874

Statement of Evidence:

North Quarter Corner of Section 35, Township 108 North, Range 39 West, 5th Principal Meridian, Murray County, Minnesota.

GLO - JULY, 1861 SET POST IN MOUND

UNDATED - SURVEY RECORD FOR SECTION 35 SHOWS THE ORIGINAL GOV'T CORNER WAS FOUND. A DISTANCE OF 2637.7 IS SHOWN TO THE NW AND NE SECTION CORNER.

11/13/2008 - CORNER CERTIFICATE BY PERRY ZIESKE SHOWS THAT HE EXCAVATED AND FOUND A 12X10 STONE. PLACED 1" IRON PIPE WITH CAP #23008.

SEPTEMBER 2020 - WESTWOOD PROFESSIONAL SERVICES SEARCHED AND FOUND AN IRON WITH CAP #23008. ACCEPTED FOUND MONUMENT AND SET REFERENCES.

Analysis of the recovered data, field evidence and survey measurements, indicates that the monument found is the correct perpetuation of this corner. For additional information concerning this corner please contact Westwood Professional Services.